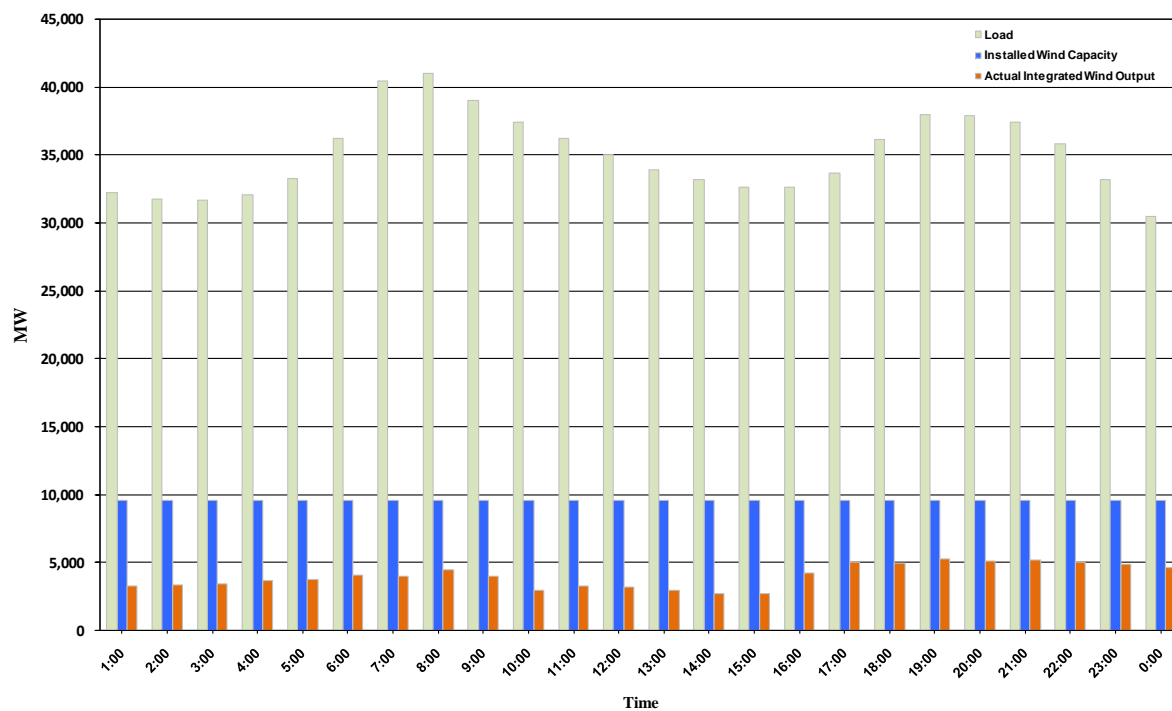




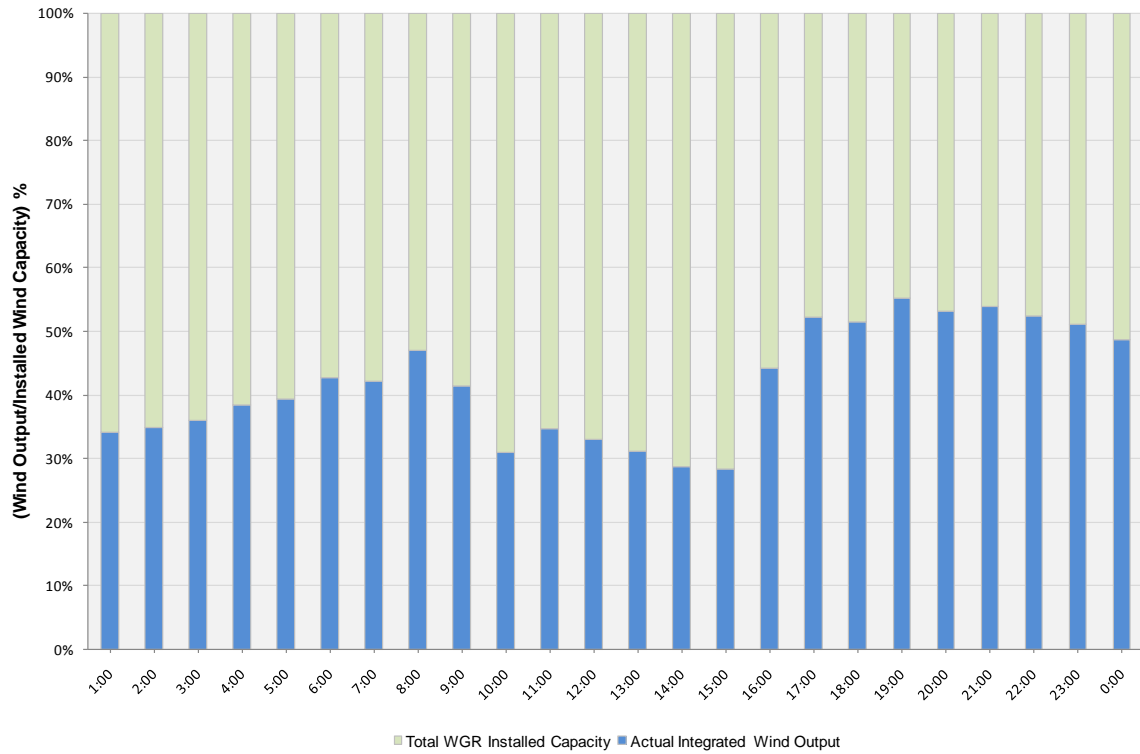
ERCOT Grid Operations Wind Integration Report: 12/07/10

| | |
|----------------------|-----------|
| Peak Load | 41,020 MW |
| Load Peak Hour | 08 |
| Wind Record 06/12/10 | 7016 MW |
| Max Wind value | 5726 MW |
| Wind Peak Hour | 18:21:00 |
| Wind Integration % | 15.06 |

Hourly Average Actual Load vs. Actual Wind Output
12-07-2010



Actual Wind Output as a Percentage of the Total Installed Wind Capacity
12-07-2010



Actual Wind Output as a Percentage of the ERCOT Load
12-07-2010

